

2026 春季學期 遙距課程新生迎新簡介會 Student Orientation Session for Distance Learning Programmes (2026 Spring Term)



Our History and Experiences



School of Open Learning

A few universities in Asia have established a dedicated department to support DL and PT students.



Qualifications Framework and You

```
reg ln_income c.age#c.age edu female if S003==344
```

| Source | SS | df | MS | Number of obs | = | 1,995 |
|----------|------------|-------|------------|---------------|---|--------|
| Model | 79.5133976 | 4 | 19.8783494 | F(4, 1990) | = | 80.05 |
| Residual | 494.154582 | 1,990 | .248318886 | Prob > F | = | 0.0000 |
| | | | | R-squared | = | 0.1386 |
| | | | | Adj R-squared | = | 0.1369 |
| Total | 573.66798 | 1,994 | .287697081 | Root MSE | = | .49832 |

| ln_income | Coefficient | Std. err. | t | P> t | [95% conf. interval] | |
|-------------|-------------|-----------|-------|-------|----------------------|-----------|
| age | .0206176 | .003856 | 5.35 | 0.000 | .0130553 | .02818 |
| c.age#c.age | -.0002981 | .0000411 | -7.25 | 0.000 | -.0003787 | -.0002174 |
| edu | .056944 | .0065062 | 8.75 | 0.000 | .0441843 | .0697037 |
| female | -.0050083 | .0225065 | -0.22 | 0.824 | -.0491471 | .0391305 |
| _cons | .8763882 | .0987142 | 8.88 | 0.000 | .6827941 | 1.069982 |

Source:WVS

Qualifications Framework and My Private Life

Personally Guiding
Your Children



Equip myself with the
communication skills and
intelligence to effectively
engage with my children's
teachers



More Evidence on Benefiting from Studying Part-time

| Professional & Economic Capital | <ul style="list-style-type: none">• Secured a new job• Analytical thinking• Skills enabled some to start their own business. |
|---------------------------------|--|
| Personal Capital | <ul style="list-style-type: none">• Creating a routine, structure, and sense of purpose that supported mental health• Self-confidence, self-esteem, and self-respect |
| Social Capital | <ul style="list-style-type: none">• Enduring friendships with peers• Enriched their worldview and social circles |

Swain and Hammond (2011, International Journal of Lifelong Education):
a transformative investment would not want to have missed

內容 Contents



香港都會大學及公開進修學院簡介
Introduction of HKMU &
School of Open Learning



遙距學習課程
Distance-learning (DL) Programmes



學習量及選科指引
Study Load & Advice on Course Selection



評核方法
Assessment of Study



學費資助
Financial Assistance on Tuition Fees



學生平台及支援
Students Platform and Support



校園設施
Campus Facilities



學習方法及建議
Learning Methods & Recommendations



學習支援及學生活動
Learning Support & Student Activities



問與答
Q&A



01



mu

香港都會大學及公開進修學院簡介
Introduction of HKMU &
School of Open Learning

香港都會大學簡介 Introduction of HKMU

大學正名為「香港都會大學」

Renamed as “Hong Kong Metropolitan University”



2021

2025

全港本科生
人數排名 **第五**

HKMU ranks around the 5th in
student enrolment throughout
Hong Kong

政府創辦「香港公開進修學院」
The government founded the “Open
Learning Institute of Hong Kong (OLI)”

1989

1997



更名為「香港公開大學」

Renamed as “The Open University of Hong Kong”

香港都會大學簡介 Introduction of HKMU

現時全港最具規模的自資院校，畢業生人數超過
HKMU is the largest self-financing university
in Hong Kong, graduates are more than

160,000



學院及職責 Schools and Duties

人文社會科學院

School of Arts and Social Sciences

李兆基商業管理學院

Lee Shau Kee School of Business and Administration

護理及健康學院

School of Nursing and Health Sciences

教育及語文學院

School of Education and Languages

科技學院

School of Science and Technology



編制學科內容及課程安排
Development of curricular



提供本科、研究生及遙距學習課程
Offers Undergraduate, Master and Distance-learning programmes

學院及職責 Schools and Duties

李嘉誠專業進修學院

Li Ka Shing School of Professional and Continuing Education (LiPACE)



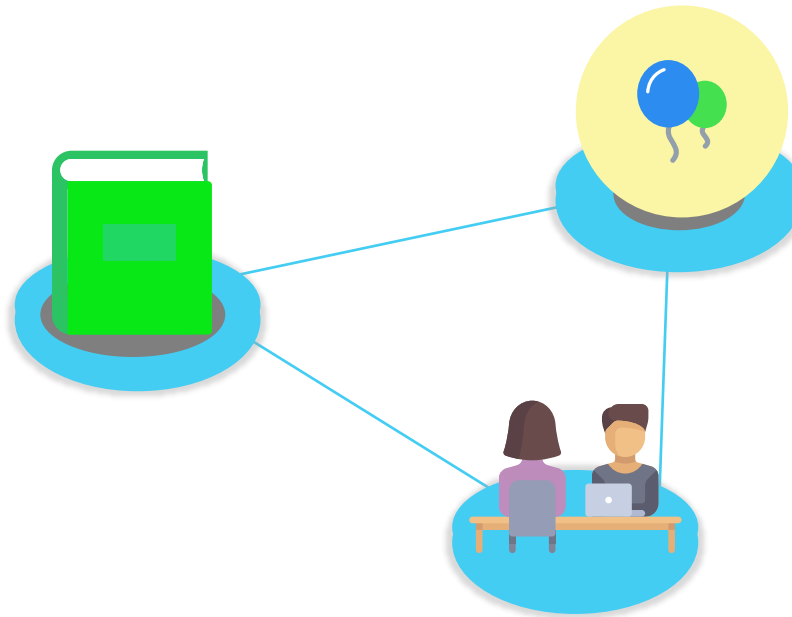
提供應用教育文憑、高級文憑、文憑及證書課程
Offers Diploma of Applied Education, Higher
Diploma, Diploma and Certificate Programmes

公開進修學院 School of Open Learning

成立於2021年，與香港公開大學更名為香港都會大學的同一天。

Established in 2021, the same day that the Open University of Hong Kong was retitled Hong Kong Metropolitan University.

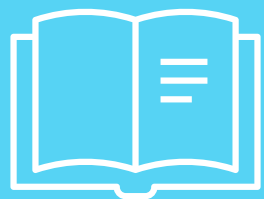
統籌及協調遙距課程
To coordinate and facilitate distance-learning courses



提供多種學生活動，豐富學生校園生活及學習體驗
To provide a variety of student activities to enrich their campus life and learning experience

幫助遙距及兼讀課程的學生有效學習，以取得本科及研究生學歷
To assist students of distance-learning and part-time programmes to study effectively to obtain undergraduate and postgraduate qualifications

02



遙距學習課程

Distance-learning (DL)
Programmes

遙距課程特色 Features of Distance-learning Programmes

毋須受限於校園的學習

Learning beyond the classroom

學習時間和速度可大程度上自決

Flexibility in study pace and schedule

時間安排更靈活，讓同學兼顧及平衡工作、家庭及生活

Distance-learning courses offer more flexibility for students to balance and manage their studies around their work, family and personal life.

遙距學習讓學生不論在任何地方，只需要有互聯網連接，則可透過電腦、平板電腦，甚至手機參與學習

Distance learning allows students to participate in learning via computers, tablets and even mobile phones wherever they are, as long as they have an internet connection.



遙距課程的認受性 Recognition of Distance-learning Programmes

香港都會大學頒授之學位均獲本地及國際認可。

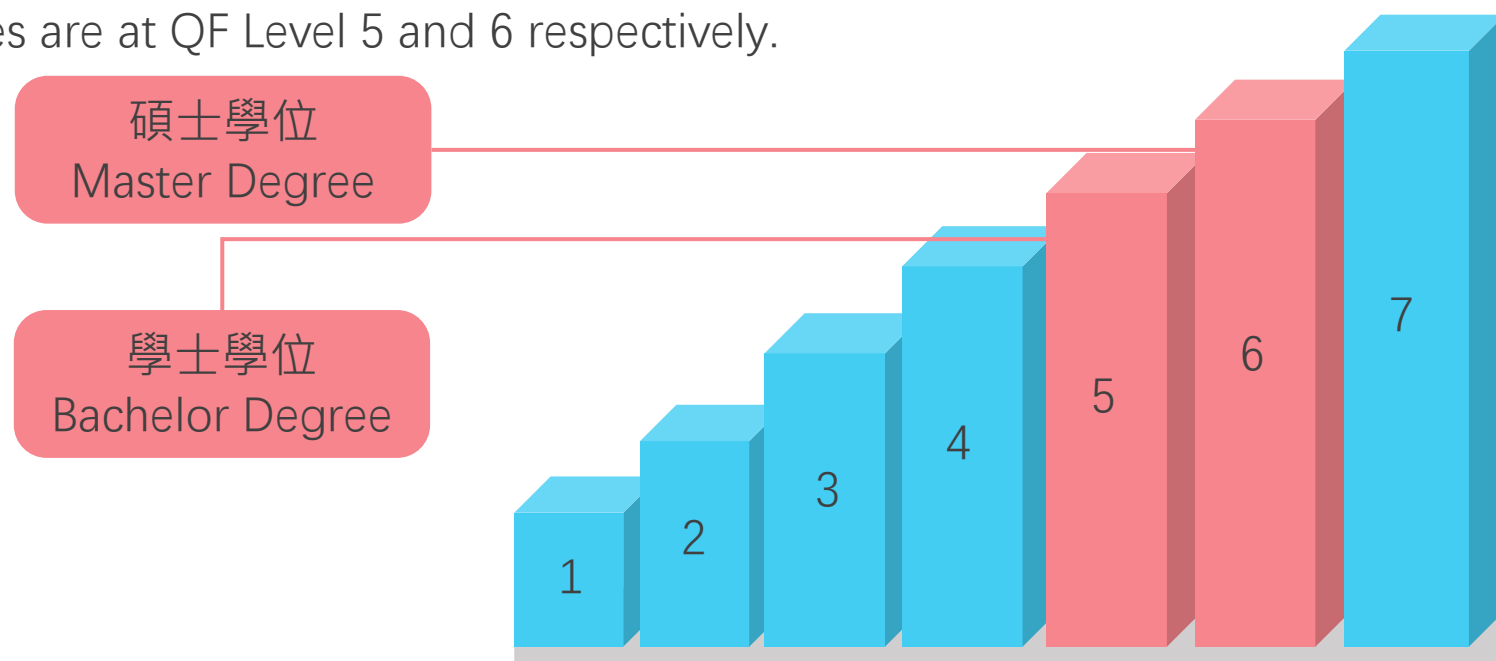
Degrees awarded by HKMU are recognised locally and internationally.

大學課程（面授或遙距學習模式）都載列於政府資歷名冊上。

University programmes (face-to-face / DL) are listed on the HK Qualifications Register (QR).

大學提供的學士學位課程及碩士學位課程分別屬香港資歷架構下的**第五及第六**級別。

Our Bachelor's and Master's Degrees are at QF Level 5 and 6 respectively.



課程結構及學分系統 Programme Structure and Credit System

三學分系統下，科目的學分值一般為 3 的倍數，例如：3, 6, 9, 12 學分(credit-units)。
Under the 3-credit-unit system, credit-units in multiples of 3 (e.g. 3, 6, 9, 12 'credit-units' etc.)

| 課程程度 Programme Level | 學分要求 Credit Requirement |
|--|---|
| 普通學士學位課程 Ordinary Bachelor's Degree | 至少完成 90 學分 Successful completion of at least 90 credit-units |
| 榮譽學士學位課程* Bachelor's Degree with Honours* | 至少完成 120 學分 Successful completion of at least 120 credit-units |

*榮譽學士學位分為：甲等、乙等一級、乙等二級和丙等

*Honours Degrees Programme can be classified as: First Class, Second Class (Upper Division), Second Class (Lower Division) and Third Class



課程結構及學分系統

Programme Structure and Credit System

秋季學期 Autumn Term:
修讀總週數均為十九星期，
當中包括三星期的考試週
last for 19 weeks with the
last three weeks as an
examination period

Autumn
Term

九月上旬開始
Beginning early September

學年
Academic Year

春季學期 Spring Term:
修讀總週數均為十九星期，
當中包括三星期的考試週
last for 19 weeks with the
last three weeks as an
examination period

Spring
Term

一月中開始
Beginning mid-January

Summer
Term

五月下旬開始
Beginning late May

夏季學期 Summer Term:
修讀總週數為十二星期，當中包括兩星期的考試週 *此學期較少科目可供選擇
last for 12 weeks with the last two weeks as an examination period *Fewer courses offered

校曆表及重要日子 Academic Calendar and Important Date

2026 春季學期

12/1 開學日 First day of term

29/3 申請延期修業的截止日期
Last day to apply for deferment of studies

19/4 最後一份作業呈交限期
Final assignment cut-off date

4-24/5 考試期 Examination period

24/5 學期完結 Last day of term

2026 年春季學期

| 週次 學年 | 一 | 二 | 三 | 四 | 五 | 六 | 日 | 週次 學期 | 備註 |
|----------|-----|----|----|----|----|----|------|----------|-----------------------|
| 2026 | 1 月 | | | | | | | | |
| 20 | 12 | 13 | 14 | 15 | 16 | 17 | 18 | 1 | 12/1 開學日 (16 個教學週) |
| 21 | 19 | 20 | 21 | 22 | 23 | 24 | 25 | 2 | |
| 22 | 26 | 27 | 28 | 29 | 30 | 31 | | 3 | |
| | 2 月 | | | | | | | | |
| 23 | | | | | | | 1 | | |
| 24 | 2 | 3 | 4 | 5 | 6 | 7 | 8 | 4 | |
| 25 | 9 | 10 | 11 | 12 | 13 | 14 | 15 | 5 | |
| 26 | 16 | 17 | 18 | 19 | 20 | 21 | 22 | 6 | 17-19/2 農曆年假 |
| | 23 | 24 | 25 | 26 | 27 | 28 | | 7 | |
| | 3 月 | | | | | | | | |
| 27 | | | | | | | 1 | | |
| 28 | 2 | 3 | 4 | 5 | 6 | 7 | 8 | 8 | |
| 29 | 9 | 10 | 11 | 12 | 13 | 14 | 15 | 9 | |
| 30 | 16 | 17 | 18 | 19 | 20 | 21 | 22 | 10 | |
| 31 | 23 | 24 | 25 | 26 | 27 | 28 | 29 | 11 | 29/3 申請延期修業的截止日期 |
| | 30 | 31 | | | | | | 12 | |
| | 4 月 | | | | | | | | |
| 32 | | | 1 | 2 | 3 | 4 | 5 | | 3-7/4 復活節及清明節 |
| 33 | 6 | 7 | 8 | 9 | 10 | 11 | 12 | 13 | |
| 34 | 13 | 14 | 15 | 16 | 17 | 18 | (19) | 14 | 19/4 最後一份作業呈交限期* |
| 35 | 20 | 21 | 22 | 23 | 24 | 25 | 26 | 15 | 19/4 申請退修科目 / 課程的截止日期 |
| | 27 | 28 | 29 | 30 | | | | 16 | |
| | 5 月 | | | | | | | | |
| 36 | | | | | 1 | 2 | 3 | | 1/5 勞動節 |
| 37 | 4 | 5 | 6 | 7 | 8 | 9 | 10 | 17 | 4-24/5 考試期 (3 週) |
| 38 | 11 | 12 | 13 | 14 | 15 | 16 | 17 | 18 | |
| | 18 | 19 | 20 | 21 | 22 | 23 | 24 | 19 | 24/5 學期完結 |

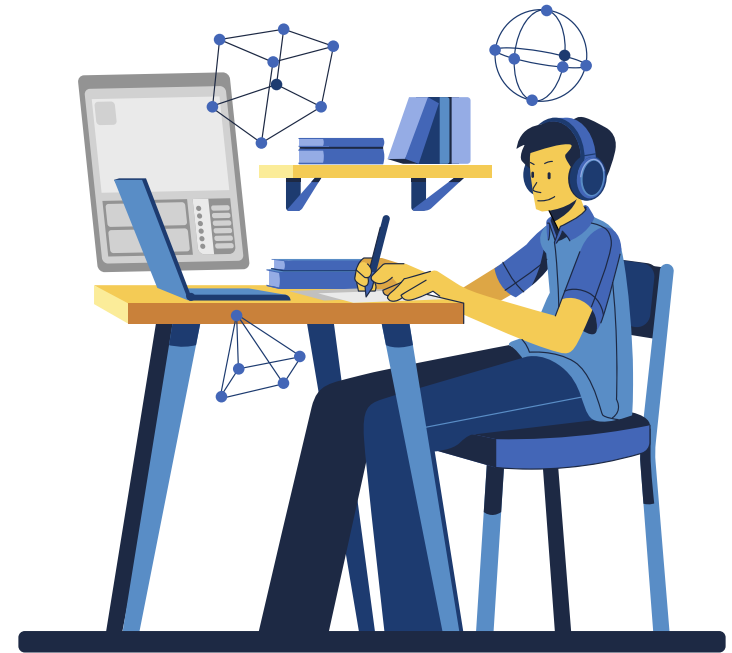
科目程度 Levels of Course

科目的修課期一般為一學期或兩學期，科目編號的首四個數字代表科目的深淺程度。

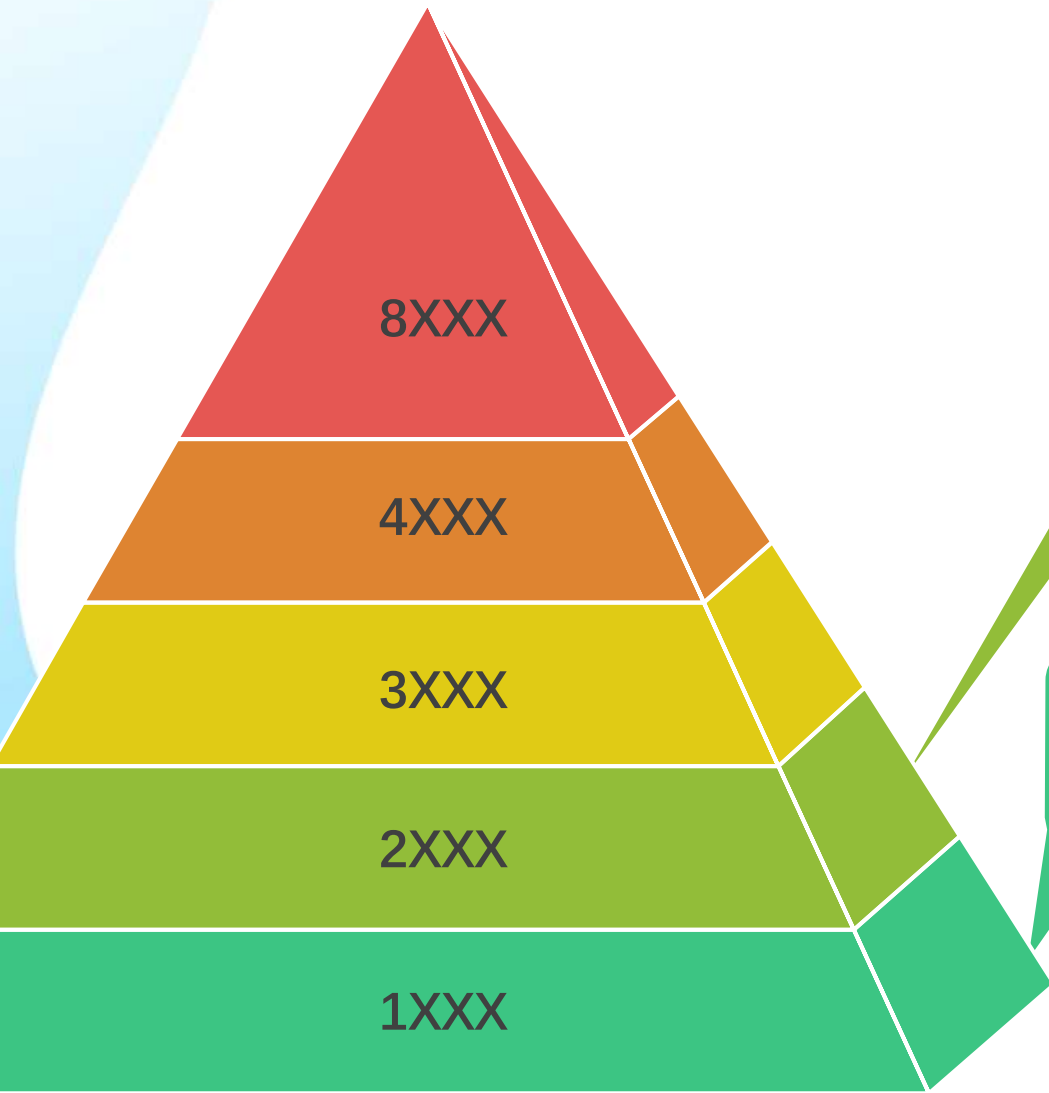
Courses normally run for one or two terms, and the first four digits of the course code generally indicate the course level.

按課程要求，修畢及累積所需學分和科目後可取得相關資格。

The relevant qualification will be awarded upon completing the required courses and accumulating the necessary credits as specified by the programme requirements.



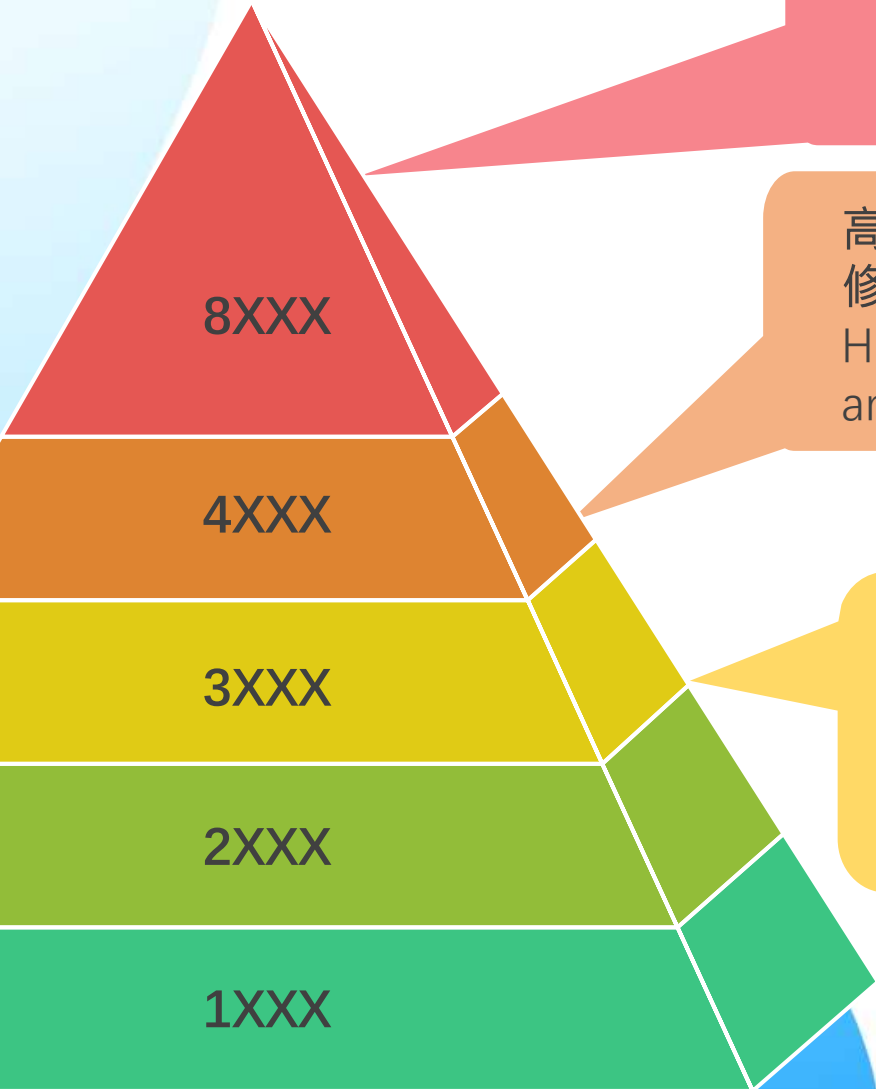
科目程度 Levels of Course



中級程度：科目可能設有基礎程度的建議先修科目。
Middle: These courses may have recommended prerequisites at the foundation level.

基礎程度：科目適合新生修讀。
Foundation: These courses are suitable for new students.

科目程度 Levels of Course



深造程度：這類科目屬於深造證書、深造文憑、碩士或博士學位課程科目。

Postgraduate: These are courses offered under a Postgraduate Certificate and Diploma, Master's or Doctorate Degree.

高級（榮譽）程度：這類科目一般為修讀榮譽學士學位課程須選修的科目，通常設有建議先修科目。

Higher (Honours): These courses have recommended prerequisites and are required for an Honours degree.

高級程度：科目通常設有建議先修科目。學生修讀學士學位課程，必須完成一些高級程度科目。

Higher: Courses typically have recommended prerequisites. Students pursuing a bachelor's degree must complete some higher-level courses.

學科編號 Course Code

例子 Example

Accounting in Business and Practice

該科所屬之學科範疇。

ACT is the subject area code.

ACT3094BED

4位數字顯示課程程度：
1000, 2000, 3000 and 4000
The four-digit number
indicates the course level.

英文字母表示該科所屬之學院：

A：人文社會科學院
B：李兆基商業管理學院
E：教育及語文學院
N：護理及健康學院
S：科技學院

The letter indicates the School offering the course:

A: School of Arts and Social Sciences
B: Lee Shau Kee School of Business and Administration
E: School of Education and Languages
N: School of Nursing and Health Sciences
S: School of Sciences and Technology

英文字母用作識別科目的學習模式。

The 7th letter indicates the study mode.

D: Distance-learning

英文字母用作識別科目的教學語言。

The 6th letter indicates the medium of instruction.

E: English

03



學習量及選課指引

Study Load and
Advice on Course Selection

學習量 Study Load



註冊值 Registration Value:

3學分制度下，新生於首個學期獲分配總註冊值**最多為12**個註冊值。

*註冊值是用以表示一個科目在一個學期內的學習量。

Under the 3-credit-unit system, new students can register for courses with a **maximum** registration value of **12** for the first term.

*Registration value indicates a student's study load per term



學習量 Study Load:

以修讀總註冊值15的科目組合為例，每週約需要溫習30至40小時。

Students are expected to study 30 to 40 hours a week for a 15-registration-value study load.

學習量 Study Load



學位完成時間 Degree Completion Timeline:

若你第一個學期修讀總註冊值12的科目組合，而在往後的每個學期都平均修讀總註冊值15的科目組合為例，同學約三年半內可取得一個90學分的普通學位。

*如果獲大學授予學分承認或循指定途徑修讀，時間將會更短。

If you study for the maximum of 12 registration value in the first term, and 15 registration value in the following terms, the approximate time you would need to obtain a 90-credit-unit ordinary degree would be three and a half years.

*The time span may be reduced through advanced standing, credit exemption, or entry pathway.

全職人士一般需用五至六年以修畢一個學位課程。

For students who have full-time jobs, they may tend to spread the study load for a degree over a period of five to six years.



選科指引 Advice on Course Selection

01

查看開辦課程。

Check the available programmes.

02

考慮自己的學術興趣或職業發展需要來選擇修讀課程。

Consider your academic interests or career development needs when choosing which programmes to study.

04

查看學科開辦時間表及規劃學習。

Check the course presentation schedule and plan your study accordingly.

03

查閱課程內容及要求。

Access and review the programme contents and requirements.

04



評核方法

Assessment of Study

評核方法 Assessment of Study

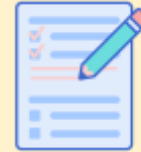
大學的科目成績評核方法主要分兩個方面：
Two main assessment forms for most courses:



平時作業
continuous assessments

作業（包括文章或簡答）
Assignments (Essay or short questions)
作業（多項選擇題）
Assignments (Multiple choice)
研究計劃
Project
日間課堂
Day School

平時作業總分
Continuous Assessment Results



考試 examinations

考試總分
Examination Result



科目總分 Course Result

科目評核的詳情將由學科主任 / 學科老師提供，或詳列於有關的學習教材或「課程大綱」內。

Details of course assignments will be provided by the programme leader/tutors or will be listed in the relevant course materials.

評核方法 Assessment of Study

大部分科目均設有期終考試。

Most courses have an end-of-course examination.

大學的考試一般於12月 / 1月、5月 及8月舉行。考試時間表會在考試期之前約一個月於MyHKMU公佈。
Examinations are normally held in December / January, May and August. The examination timetable will be announced via the HKMU about one month before the start of the examination period.



| 成績等級 Course Grade | 等級點 Grade Point | 標準 Standard |
|-------------------|-----------------|--------------------|
| A+ | 4.3 | 優異 Excellent |
| A | 4.0 | |
| A- | 3.7 | |
| B+ | 3.3 | 良好 Good |
| B | 3.0 | |
| B- | 2.7 | |
| C+ | 2.3 | 中等 Satisfactory |
| C | 2.0 | |
| C- | 1.7 | 僅可 Marginal |
| D | 1.0 | |
| Fail | 0.0 | 不及格 Failure |

05



學費資助

Financial Assistance
on Tuition Fees

學費資助 Financial Assistance on Tuition Fees

修讀遙距課程的同學可申請以下資助：

Students who have enrolled in distance-learning programmes may apply for the following financial assistance:



大學資助
Financial Assistance
supported
by the University

香港都會大學助學金

HKMU Bursaries

香港都會大學緊急援助貸款

The HKMU Emergency Assistance Loan

外間機構提供的資助

Other Assistance Provided by External Organisations

學費資助 Financial Assistance on Tuition Fees

修讀遙距課程的同學可申請以下資助：

Students who have enrolled in distance-learning programmes may apply for the following financial assistance:



政府資助
Financial Assistance
supported
by the Government

持續進修基金 Continuing Education Fund (CEF)

擴展的免入息審查貸款計劃 The Extended Non-means-tested Loan Scheme (ENLS)

「專上學生資助計劃」 The Financial Assistance Scheme for Post-secondary Students (FASP)

「專上學生免入息審查貸款計劃」 Non-means-tested Loan Scheme for Post-secondary Students (NLSPS)

06



學生平台及支援

Students Platform
and Support

甚麼是 MyHKMU? What is MyHKMU?

MyHKMU 是使用本校所有網上服務和資源的統一網頁。

MyHKMU is a portal serving as the single entry point for all of the university's online services and content.




1. 可以使用本校大部分的網上服務，如網上學習系統、電子圖書館及其他服務。Access most of the university's online services including Online Learning Environment, E-Library, etc.
2. 接收大學向你發出的個人通訊，如與你修讀學科有關的消息或活動資料。Receive messages from the university, including information or event details related to your course of study.

甚麼是 MyHKMU? What is MyHKMU?

在進入MyHKMU前，請先設定統一密碼。

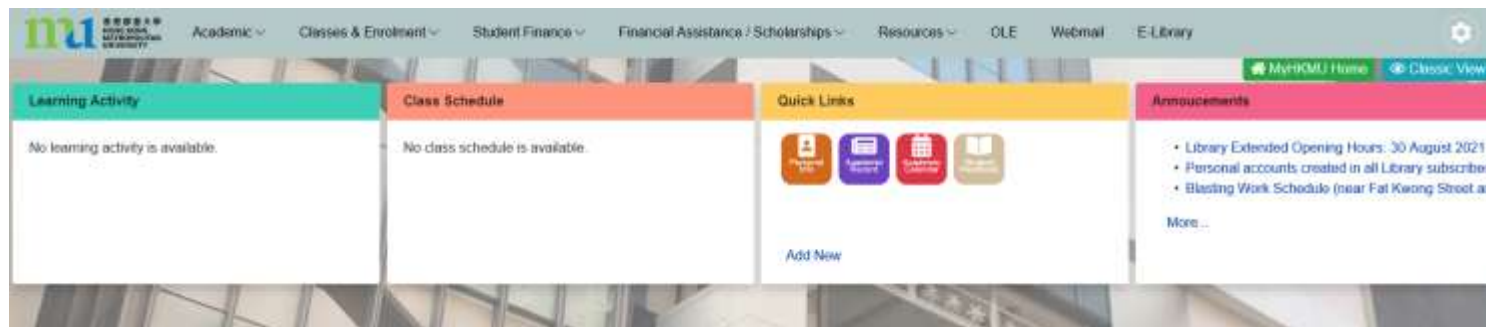
Before accessing MyHKMU, please set up your password first.

 Adverse weather

Login to MyHKMU

Log In

[> Need Help?](#)



如需要技術支援，請致電熱線**2711-2100**或電郵至**itohelp@hkmu.edu.hk**。

For technical support, please call the hotline at **2711-2100** or email **itohelp@hkmu.edu.hk**.

檢視 / 下載付款收據 View / Download Payment Receipt



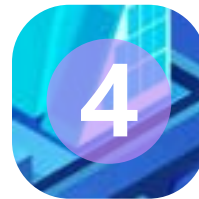
登入MyHKMU
Log-in MyHKMU



在「My Programme」
一欄選取你修讀課程
Select your programme
under 'My Programme'
section



在「學生財務」一欄按「學費收據查詢」
Click on 'Receipt Enquiry' under 'Student
Finance' section



下載付款收據
Download the payment receipt

收據只於網上保存兩年。請你妥善保存已下載的收據。

Receipts issued **within two years will be available** for download, please ensure you have saved the copy(s) of receipt(s).

網上學習系統

Online Learning Environment (OLE)

OLE是一個互動的在線學習環境，供同學學習、獲取課程信息和與導師交流。

The OLE is an interactive online learning environment for students to study, obtain course information, exchange ideas and communicate with tutors.

網址 Website: <https://ole.hkmu.edu.hk>



網上學習系統
Online Learning
Environment



Username 使用者名稱 :

Password 密碼 :

Enter 登入

Guest 訪客

技術支援 Technical Support

電話 Tel : 2768 6454

電郵 Email : olemaster@hkmu.edu.hk



Zoom技術支援 Zoom Technical Support

電話 Hotline:

2768 6404 (9:00 – 19:30, 星期一至五 Monday to Friday)

2768 6454 (9:00 – 18:00, 星期一至五 Monday to Friday)

電郵 Email: zoomsupport@hkmu.edu.hk

學生IT支援服務/熱線 Student IT Helpdesk/Hotline

電話 Hotline : 2711 2100

服務時間 Opening Hours :

- 09:00 – 21:00 (星期一至五 Monday to Friday)
- 09:00 – 17:40*

*農曆除夕、農曆新年、除夕、中秋節、冬至及平安夜除外

* Except Lunar New Year's Eve and Day, New Year's Eve, Mid-Autumn Festival, Winter Solstice and Christmas Eve.

電郵 Email : itohelp@hkmu.edu.hk



07



校園設施

Campus Facilities

都大校園 HKMU Campus



正校園
Main Campus
(MC)

九龍何文田牧愛街30號
30 Good Shepherd Street,
Ho Man Tin, Kowloon

賽馬會校園
Jockey Club
Campus (JCC)

九龍何文田忠孝街81號
81 Chung Hau Street,
Ho Man Tin, Kowloon

賽馬會健康護理學院
Jockey Club Institute
of Healthcare (IOH)

九龍何文田常盛街1號
1 Sheung Shing Street,
Ho Man Tin, Kowloon

本校圖書館 Library

開放時間 (Opening Hours):

星期一至五：09:00 – 22:00

Monday to Friday: 09:00 – 22:00

星期六、星期日及公眾假期：12:00 – 21:00

Saturday, Sunday and Public Holiday: 12:00 – 21:00

何鴻燊圖書館 (Stanley Ho Library)

地點 (Location):

正校園C座1樓及2樓

(Level 1& Level 2, Block C, Main Campus)

電話 (Hotline): 2768 6777

何息夷圖書館 (Ho Sik Yee Library)

地點 (Location):

賽馬會校園5樓

(Level 5, Jockey Club Campus)

電話 (Hotline): 3120 2555

學習共享空間 Learning Commons

正校園Main Campus (MC)



學生學習共享空間 (24小時開放)
正校園B座 B-130室

Student Learning Common
(Open 24 hours)
B-130-1 Level, Main Campus



討論室
正校園郭得勝樓(C座)
4樓C0414室

Discussion Room
C0414, 4/F, Kwok Tak
Seng Building (Block C)



學生自學中心 (供持有有效學生證之學生使用)
正校園郭得勝樓(C座)3樓C0310
方燕琮學生自學中心

Self-study Centre (For student with valid HKMU
student card)
Connie Fong Student Self-study Centre
C0310, 3/F, Kwok Tak Seng Building (Block C)

學習共享空間 Learning Commons

賽馬會校園 Jockey Club Campus (JCC)



冠忠巴士集團協作學習室
賽馬會校園E座E0617室

Kwoon Chung Bus Group
Collaborative Study Room
Room E0617 Jockey Club
Campus



學習坊
賽馬會樓校園E座0樓E0G26室

Discussion Room
C0414, 4/F, Kwok Tak Seng
Building (Block C)



自學中心 (供持有有效學生證之學生使用)
賽馬會校園E座5樓何息夷圖書館內

Self-study Centre (For student with
valid HKMU student card)
Inside Ho Sik Yee Library, 5/F, Block E,
Jockey Club Campus

08



學習方法及建議

Learning Methods &
Recommendations

學習方法及建議 Learning Methods & Recommendations



保持積極
Stay positive



時間管理與自律
Learn time management and
self-discipline

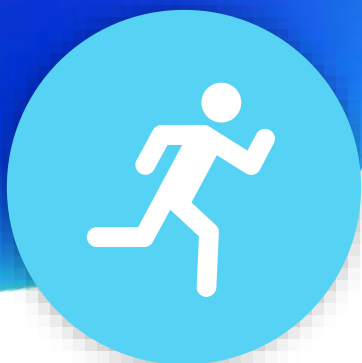


需要時尋求幫助
Seek help when needed



了解學習量及所需學習時間
Understand study load and
study time needed

09



學習支援及學生活動

Learning Support and
Student Activities

學校及學院支援 University and School Support

教務處 Registry

遙距課程

Distance-learning Programmes

電話 Hotline : 2768 6601-2

電郵 Email :

regadm@hkmu.edu.hk

畢業

Graduation

電話 Hotline : 2768 6683/92

電郵 Email :

reggrad@hkmu.edu.hk

學分承認組

Advance Standing Team

電話 Hotline : 2768 6624

電郵 Email :

regaso@hkmu.edu.hk

考試及評核組

Examinations & Assessment Team

電話 Hotline : 2768 6688

電郵 Email :

regexam@hkmu.edu.hk



學校及學院支援 University and School Support

| 學院 School | 一般查詢熱線／電郵 Enquiry hotline/Email |
|---|---|
| 人文社會科學院 School of Arts and Social Sciences | 2768 5717／ as@hkmu.edu.hk |
| 李兆基商業管理學院 Lee Shau Kee School of Business and Administration | 2768 6940／ ba@hkmu.edu.hk |
| 教育及語文學院 School of Education and Languages | 2768 5822／ el@hkmu.edu.hk |
| 護理及健康學院 School of Nursing and Health Sciences | 3970 2968／ nhs@hkmu.edu.hk |
| 科技學院 School of Science and Technology | 3120 2710／ sct@hkmu.edu.hk |

學校及學院支援 University and School Support

公開進修學院 School of Open Learning

- 提供專業的行政支援及查詢服務
Provide professional administrative support and enquiry services
- 於晚間及週末開放，以照顧在職學生的需要
Open in evenings and weekends to cater for the needs of distance learning students



2768 6743



sol@hkmu.edu.hk



2768 6743



何文田正校園B座地庫128室
B-128, -1/F, Block B, Main Campus

CONTACT US



學習支援 Learning Support



- 為學生提供學習支援，包括學習技巧和考試技巧的研討會/工作坊，以提高學生的學習效率。
Provide learning support to students, including seminars/workshops on study skills and exam skills to enhance students' learning effectiveness
- 掌握進修大學課程技巧
Master study skills for higher education



學習支援及學生活動 Learning Support and Student Activities

「躲避盤體驗課」

“Dodgebee Experience Workshop”

「肌筋膜放鬆伸展工作坊」

“Myofascial Release and Stretching Workshop”

「蜜語工坊：手作天然蜂蜜潤唇膏」

“Handcraft Workshop: DIY Your Honey Lip Balm”

毛筆書法工作坊

Chinese Calligraphy Workshop



V-power 義工隊 V-power Volunteer Team

舉辦多元種類的活動，包括：

A variety of activities include:

迎新日Orientation day

桌遊同樂日Board Game Fun Day

視障人士服務及訓練日

"Service and Training Day Supporting the Visually Impaired "

家門鐵閘加加油 "Gate Maintenance with Care"





**COMING
SOON**

活動推介

Forthcoming Events



桌遊樂時 Board Game Moment

書寫你的賀年詞 Dance Your Ink, Greet the Spring: Pen Your Own New Year Couplets

「AI超能學習術：從創建到應用全方位探索」
AI Empowered Learning: From Innovative Creation to Practical Application Workshop Series



Join Us
桌遊樂時
BOARD GAME MOMENT
23 JANUARY, 2026
7 PM - 9 PM
香港都會大學正校園

桌遊類型包括
陣盤類
猜謎類
推理類

立即報名

報名費: \$50
(全場出席活動者可獲退還報名費)
名額: 24名
(名額有限, 先到先得)
語言: 廣東話

2768 6743 | info@hkmu.edu.hk | @hkmu | #hkmu



「AI引領智慧學習」系列工作坊
"AI EMPOWERED SMART LEARNING" WORKSHOP SERIES

制繁就簡：從雙語圖文流中提取文字
From Bilingual to Text: Turning Words, Tables, and Images into Clean Words
2026-01-09 | 1:00 - 5:00 pm | 廣東話/English | 200M
工具包括: Textmate, Tongyi/Ernie, Baidu Copilot, GEMINI, Microsoft Copilot, etc.

66 師從AI：激發創意與培養批判性思維
Learn from AI: Sparking Creativity and Critical Thinking
2026-01-09 | 1:00 - 5:00 pm | 英語/English | 200M
內容: Hypothesis, 從AI如何激發創意, 從AI如何批判性思維
Speaker: Prof. Zhai Xuesong, Associate Professor of Education, City University of Hong Kong

從靈感到論文：AI如何助力你的學術溝通之路
From Inspiration to Paper: How AI Empowers Your Academic Communication
2026-01-09 | 1:00 - 5:00 pm | 英語/English | 200M
內容: Hypothesis, 從AI如何激發創意, 從AI如何批判性思維
Speaker: Prof. Zhai Xuesong, Associate Professor of Education, City University of Hong Kong

99 校園編碼入門
Introduction to Code Coding
2026-01-09 | 1:00 - 5:00 pm | 廣東話/English | 200M
工具包括: Textmate, Python, etc.

立即報名

2768 6743 | info@hkmu.edu.hk



「墨舞迎春」：書寫你的賀年詞
Dance Your Ink, Greet the Spring:
Pen Your Own New Year Couplets

日期: 2026年2月6日 (星期五)
時間: 下午7時至8時30分
地點: 香港都會大學正校園
報名費: \$50
名額: 24名 (名額有限, 先到先得)
語言: 廣東話
活動亮點: 書寫獨一無二的賀年揮春

立即報名

2768 6743 | info@hkmu.edu.hk

公開進修學院網頁 Website of the School of Open Learning



<https://www.hkmu.edu.hk/sol/tc/>

公開進修學院網頁 Website of the School of Open Learning

給學生的資訊



一般資訊



新生資訊



常用表格



學制改革



資源與工具



活動行事曆

投入精彩大學生活



學習支援



學生發展



社區服務

Facebook and IG





10

問與答
Q&A