



THE HONG KONG  
POLYTECHNIC UNIVERSITY  
香港理工大學

COLLEGE OF PROFESSIONAL AND  
CONTINUING EDUCATION  
專業及持續教育學院

School of Professional Education  
and Executive Development  
專業進修學院

SPEED

Centre for  
Ageing and  
Healthcare  
Management  
Research

老齡化和醫療管理研究中心

## Centre for Ageing and Healthcare Management Research Research Seminar

How can the **diabetic retinopathy screening** be provided to the  
diabetic population in Hong Kong  
by considering the equity and efficiency?

**Date** : 13 January 2021 (Wednesday)

**Time** : 11:00 am to 12:00 pm

**Mode of  
Presentation** : Online (Zoom)

**Language** : English

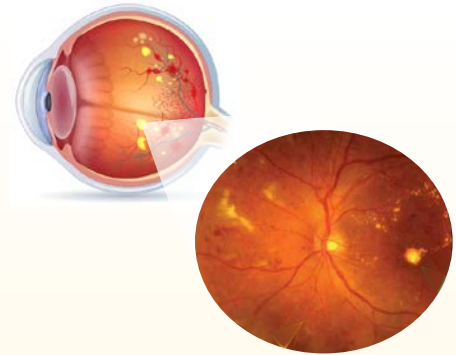


Online Registration



### Speaker

Dr Tina Jinxiao LIAN  
Research Assistant Professor,  
School of Optometry,  
The Hong Kong Polytechnic University



### Chair

Dr Ben Yuk-fai FONG  
Associate Division Head,  
Division of Science, Engineering and Health Studies,  
College of Professional and Continuing Education,  
and Director, CAHMR, SPEED,  
The Hong Kong Polytechnic University



Co-Organisers: Hong Kong College of Community Health Practitioners  
Hong Kong College of Health Service Executives  
Hong Kong College of Nursing and Health Care Management



For registration, please visit <https://bit.ly/3l4o9TE> on or before **11 January 2021 (Monday)**

For enquiry, please contact: [spcahmr@speed-polyu.edu.hk](mailto:spcahmr@speed-polyu.edu.hk)