



# Inaugural Roundtable On Dialogue of University Continuing Education Schools



**22 – 24 April 2026**

Pre-conference

22 April

Plenary

23 April

Roundtable

24 April



**HKMU Main Campus  
HKMU LiPACE Kwai Hing Campus**

**Registration**



Dialogue Partner:

Cultural Partner:



Academic Partners:



**IMPERIAL**

Supporting Organisation:



# Table of Contents

- **M**essage from the President of UALL • p.3
- **M**essage from the Dean of HKMU LiPACE • p.4
- **A**bout the Roundtable • p.5
- **V**enue Information • p.7
- **P**rogramme Rundown • p.11
- **K**eynote / Plenary Speakers • p.16
- **S**pecial Information for Non-local Participants • p.35
- **O**rganisers and Partners • p.40
- **N**otes • p.41
- **C**ontact Information • p.44

# Message from the President of UALL



Dear Global Colleagues in the University Lifelong Learning Sector,

We face many global challenges — the climate crisis most obviously, but there remains the threat of future financial and economic crises, and global pandemics. To tackle and overcome these challenges, there is one common element, namely education. As Nelson Mandela said, "Education is the most powerful weapon which you can use to change the world." And there is a growing recognition that education needs to be a lifelong endeavour — not least because of the way that AI and other new technologies are changing the world of work, our societies, and the way we as individuals function and relate to one another. Universities need to step up and play their part in creating and delivering this lifelong learning, both through their own teaching, and in partnership — with other educational providers, employers, and public authorities. That is why this International Roundtable, convened in partnership with HKMU LiPACE, is so important and urgent. It brings together a curated group of senior leaders from Africa, Asia, and Europe to move beyond rhetoric and share the operational models, innovations in credentialing, and partnership strategies that make lifelong learning a reality on the ground.

As universities, we must deliver a global revolution in lifelong learning, as a permanent international necessity. This select gathering of 30-40 practitioners and administrators allows us to confront the hard questions: How do we make flexible learning truly accessible? How do we design non-formal programmes that advance cultural understanding and sustainability? How do we align our skills agendas with both economic imperatives and social equity? The diversity of perspectives — from Kazakhstan to Kerala, from Oxford to Cape Town — is our greatest asset. By learning from one another, we can strengthen the coordinating role of continuing education schools within our institutions, as UNESCO research affirms. Let this inaugural dialogue catalyse a joint statement and, more importantly, a lasting network of peers committed to rotating this conversation across our campuses in years to come.

**Prof Jonathan Michie**  
Pro-Vice-Chancellor,  
University of Oxford and  
President, Kellogg College & Chair of UALL

# Message from the Dean of HKMU LiPACE



Distinguished Colleagues and Friends,

It is my privilege to welcome you to the Inaugural Roundtable on Dialogue of University Continuing Education Schools held in Hong Kong. Hosted by HKMU LiPACE, this gathering marks the beginning of a new chapter for our continuing education and lifelong learning sector.

We have intentionally planned this forum to be an intimate working session rather than a large-scale conference. With approximately 30 or more senior leaders and practitioners in the room, representing institutions from Africa, Asia, Europe, and beyond, we have created a space where every voice matters. Our goal is not merely to present papers, but to engage in candid, high-level dialogue about the future of lifelong learning (LLL) in universities.

As noted in recent UNESCO research, universities with dedicated lifelong learning strategies are better positioned to respond to community needs. Yet, we all face similar hurdles: the disruption of Generative AI, the urgency of upskilling workforces, the need to serve older adults, and the imperative to promote sustainability in our programme offerings. In this small group setting, we have the unique opportunity to move beyond generalities and share specific operational models, challenges, and solutions that work in our respective contexts.

We are honored to co-host this dialogue with the Universities Association for Lifelong Learning (UALL). Their partnership underscores our commitment to professionalising continuing education globally. Over the next two days, through keynotes and focused panel discussions, we will explore innovations in programme partnership with industry, adult non-formal learning, and the global skills agenda.

Our ambition for this inaugural roundtable is concrete. We aim to draft a joint statement on continuing education in universities and, more importantly, to establish a sustained network of peers. We envision this as the first of many rotating dialogues, strengthening the bonds between our institutions year after year.

Thank you for traveling to Hong Kong to contribute your expertise to this close-knit community of practice. I look forward to our discussions and to building a resilient future for lifelong learning together.

Warm regards,  
**Dr Benjamin Chan Tak-yuen**  
Dean of HKMU LiPACE

# About the Roundtable



## Background

Around the world, universities are finding their ways to respond to the pervasive applications of Generative AI in many spheres of human endeavours, train students for future skills to prepare them for employability, upskill the workforce, meet learning needs of older adults, promote local culture and sustainability, and numerous other evolving demands from the community. At the forefront of responding to these learning imperatives are continuing education schools which often represent the most inclusive

and innovative force in their universities. In a study undertaken by UNESCO Institute for Lifelong Learning (2023)\*, it was found that higher education institutions (HEI) with an institutional lifelong learning (LLL) policy/strategy are more likely to have a dedicated LLL unit. This underscores the critical coordinating and professionalising functions of continuing education schools in a university/HEI setting.

*\*International Trends of Lifelong Learning in Higher Education, Research Report*

## Q Purpose

This roundtable aims to gather university continuing education professionals and senior university administrators for a discussion of how they are helping to promote the lifelong learning mission of their respective universities and to find out about the different operational models that are prevalent in the participants' contexts as well as the challenges and opportunities they are facing.

As this roundtable is framed as a global exchange forum, participants from around the world are welcome, and in particular, those from Africa, Central Asia, East Asia, South and Southeast Asia are represented. The dialogue partner of this roundtable is the Universities Association for Lifelong Learning (UALL), which represents university continuing education schools from the UK.



## Forum Topics

- Innovations in flexible learning, credentialing and partnership development
- Adult non-formal learning and programming for cultural and sustainability themes
- Responding to skills agenda for economic and social concerns

# About the Roundtable



## Format

Keynote and Special Lectures; Country and Regional Briefings; Roundtable and Panel discussions



## Language

English



## Expected Outcomes of the Roundtable

Building on the various themes, the roundtable discussions will lead to a joint statement on continuing education and lifelong learning in universities. It is hoped that this inaugural roundtable will catalyse the formation of a

network of like-minded peers amongst university continuing education schools to continue the series in dialogue with UALL and that roundtables will be held on rotation at each other's venues in subsequent years.



## Target Participants

Leaders in university continuing education or equivalent\* and university senior administrators with remit for portfolios of lifelong learning, workforce training, community engagement and outreach.

*\*School/department/unit of continuing education, lifelong learning, adult education, extended learning, open learning, flexible learning, access, CPD and short courses, extra-mural studies, etc.*



# Venue Information

Day 0 (22 April 2026, Wed) Pre-conference Cultural Event &  
Day 1 (23 April 2026, Thu) Plenary Session – HKMU Main Campus

## Venue

**Jockey Club Council Chamber,  
12/F, Cheng Yu Tung Building,  
Main Campus, HKMU, Hong Kong**  
30 Good Shepherd Street,  
Ho Man Tin, Kowloon, Hong Kong

## Map

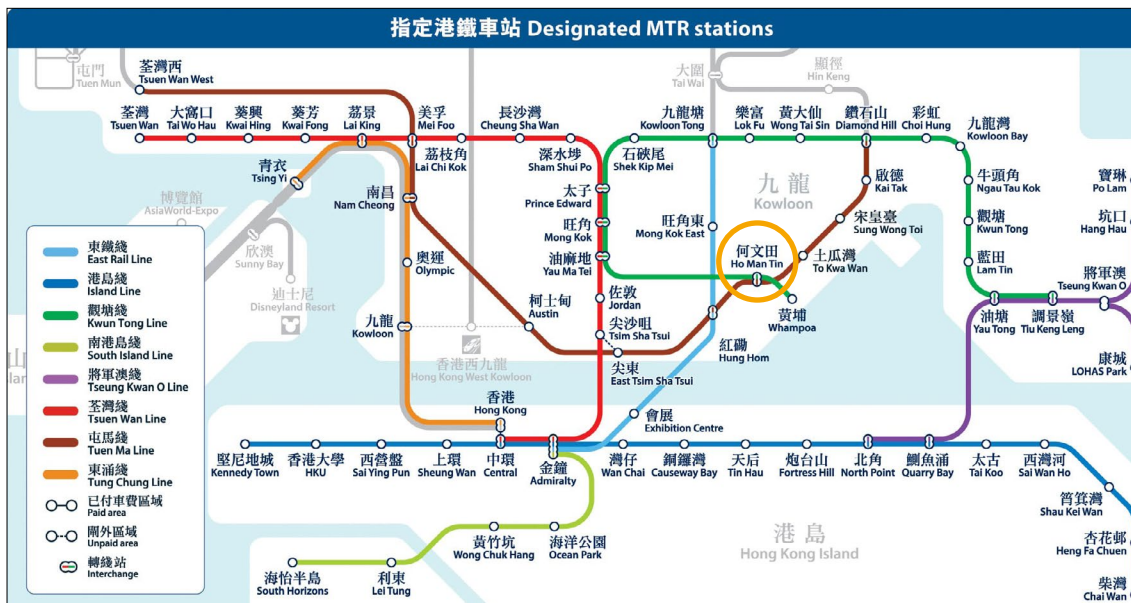


# Direction

## By Mass Transit Railway (MTR):

Alight at Ho Man Tin Station (Circled in orange below). Take Exit A2 / A3. Once you're above ground, follow the map provided above and head in the direction of Fat Kwong Street. Continue walking along Fat Kwong

Street. You will see the Hong Kong Metropolitan University (HKMU) Main Campus building (Entrance A) on your left-hand side which will be a 10-12 minutes' walk from the Ho Man Tin Station.



## By Bus:

1	Bus No. 103, 113, 170, 182, N170, N182 and N373
2	Bus No. 113, 170, 182, N170, N182 and N373
3	Bus No. 7B, 8, 18, 41, 45, 109 and E21A Minibus No. 8, 8M and 8S
4	Bus no. 7B, 8, 41, 45, 109, E21A and 241X Minibus No. 8, 8M and 8S
5	Bus no. 7B, 8, 18, 41, 45, 109 and E21A Minibus No. 8, 8M and 8S
6	Minibus No. 8, 8M and 8S
7	Minibus No. 8, 8M and 8S
8	Bus No. 8, 18, 41, 45 and E21A
9	Bus No. 7B, 8, 17 and 109 Minibus No. 8, 8S and 28M
10	Bus No. 7B, 8, 18 and 109 Minibus No. 8, 8S and 28M
11	Bus No. 18, 41, 45 and E21A Minibus No. 8M and 27M
12	Minibus No. 8, 8M, 8S, 27M and 27MS
13	Bus No. 17, 41, 45 and E21A
14	Bus No. 7B, 8, 41, 45, 109, E21A and 241X Minibus No. 8, 8M and 8S
15	Bus No. 17 Minibus No. 8, 8M, 8P, 28M, 28MS

**Bus routes -  
Kowloon Motor Bus:**

7B	Hung Hom Ferry		Lok Fu
8	Star Ferry		Kowloon Station
17	Kwun Tong (Yue Man Square)		Oi Man
18	Cheung Sha Wan (Shum Mong Road)		Oi Man (Circular)
41	Cheung Ching		Kowloon City Ferry
45	Kowloon City Ferry		Lai Yiu
241X	Cheung Ching		Oi Man

**City Bus:**

E21A	Ho Man Tin (Oi Man Estate)		Lok FuTung Chung (Yat Tung Estate)
------	-------------------------------	--	---------------------------------------

**Tunnel Bus:**

103	Chuk Yuen Estate		Pokfield Road
109	Ho Man Tin		Central (Macau Ferry)
113	Choi Hung		Kennedy Town (Belcher Bay)
170	Shatin Railway Station Bus Terminus		Wah Fu (Central)
N170	Shatin Central B/T		Wah Fu (Central)
182	Yu Chui Court		Central (Macau Ferry)
N182	Kwong Yuen B/T		Central (Macau Ferry)
N373	Luen Wo Hui B/T		Central (Macau Ferry)

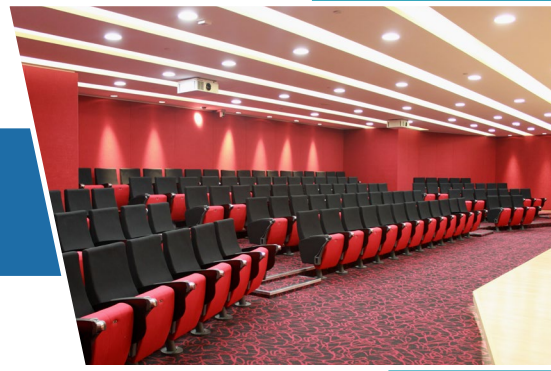
**Mini Bus (Green Top):**

8	Tsim Sha Tsui (Hankow Road)		Ho Man Tin (Sheung Wo Street)
8M	Ho Man Tin Station		Ho Man Tin (Sheung Wo Street)
8P	Tsim Sha Tsui East		Ho Man Tin Estate
8S	Tsim Sha Tsui (Hankow Road)		Ho Man Tin (King Man House)
27M	Lok Man Sun Chuen		Mong Kok Station
27MS	Ho Man Tin (Sheung Lok Street)		Mong Kok Station
28M	To Kwa Wan (Wyler Gardens)		Mong Kok Station

**Mini Bus (Red Top):**

Mong Kok (Fa Yuen Street)		Ho Man Tin Estate / Oi Man Estate (via Fat Kwong Street)
Mong Kok (Bute Street)		Hung Hom (Bulkeley Street) (via Fat Kwong Street)
To Kwa Wan (Tam Kung Road)		Oi Man Estate (via Fat Kwong Street)

**Day 2 (24 April 2026, Fri) Roundtable Meeting and  
Post-conference Musical Performance  
- HKMU LiPACE Kwai Hing Campus**



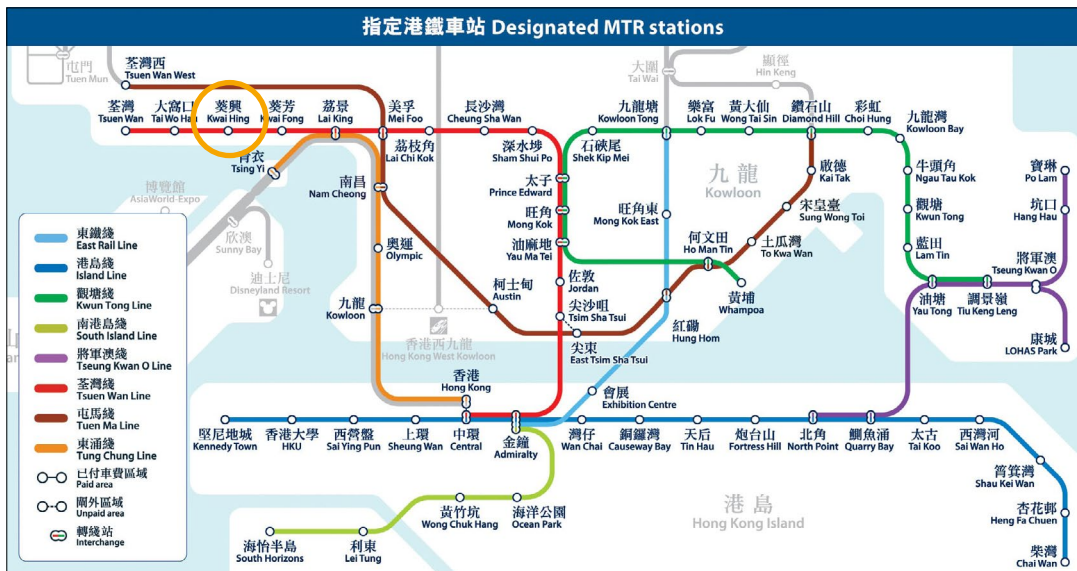
**Venue**

**Rooms 1204, 1205, 1206,  
12/F, Tower 2, Kowloon Commerce Centre,  
51-53 Kwai Cheong Road, Kwai Chung, N.T.**

**Direction**

**By Mass Transit Railway (MTR):**


Alight at Kwai Hing Station (circled in orange below) Exit E. It is a 2 minutes' walk under air-conditioned walkway from Exit E of Kwai Hing Station (located on the platform of Tsuen Wan Line towards Central) as shown in the map below.



# Programme Rundown

## PRE-CONFERENCE

 22 April, 2026

 Foyer, 12/F, Cheng Yu Tung Building, HKMU, Main Campus

Time	Agenda
17:30 - 18:00	Reception
18:00 - 18:05	Welcome by President of HKMU Prof Paul Lam
18:05 - 18:10	Remarks by Consul-General of South Africa in Hong Kong Mr Mojalefa Mogono
18:10 - 18:15	Group Photo Taking
18:15 - 18:40	Exchange of Souvenirs All Participants
18:40 - 19:15	Performance by South African Cultural Groups
19:15 - 20:45	Dinner & Networking
20:45 - 21:00	Shuttle Bus Back to City View Hotel

## DAY 1 CONFERENCE

📅 23 April, 2026

📍 Jockey Club Council Chamber, 12/F, Cheng Yu Tung Building, HKMU, Main Campus

Time	Agenda
08:45 - 09:00	Registration
09:00 - 09:10	Networking & Photos
09:10 - 09:20	<b>Opening Remarks</b> Prof Jonathan Michie (UALL Chair)
09:20 - 09:45	<b>Keynote Address 1</b> Ms Zhanna Uakasovna Yessinbayeva (Deputy Chairperson of the Committee for Higher and Postgraduate Education, Kazakhstan)
09:45 - 10:05	<b>Keynote Address 2</b> Prof Jari Multisilta (ARENE and Satakunta University of Applied Sciences)
10:05 - 10:25	Discussion Moderated by Prof Jonathan Michie (UALL Chair)
10:25 - 10:45	Tea Break & Networking

### Plenary Speakers 1 - 3 : Whole-of-University Approach to Lifelong Learning

10:45 - 11:00	<b>Plenary Speaker 1</b> Dr M.K. Biju (Mahatma Gandhi University, India) <b>Topic:</b> Lifelong Learning for the Social Good - A Reflection from Mahatma Gandhi University Kerala
11:00 - 11:15	<b>Plenary Speaker 2</b> Dr Ardak Beisenbay (L.N. Gumilyov Eurasian National University, Kazakhstan) <b>Topic:</b> Institutionalising Lifelong Learning in a National Research University: The ENU Model
11:15 - 11:30	<b>Plenary Speaker 3</b> Ms Leila Guerra (London School of Economics and Political Science, United Kingdom) <b>Topic:</b> Lifelong Learning and AI Strategies

11:30 - 11:45

Q & A Session 1

### Plenary Speakers 4 - 6 : Building on Tradition to Run a Modern CE School

11:45 - 12:00

#### Plenary Speaker 4

Prof Mahmoud Allam (American University in Cairo, Egypt)

#### Topic:

Experience Sharing from The American University in Cairo's (AUC) School of Continuing Education

12:00 - 12:15

#### Plenary Speaker 5

Dr Medeé Rall (University of Cape Town, South Africa)

#### Topic:

Adult Non-formal Learning: A South African University Model

12:15 - 12:30

#### Plenary Speaker 6

Prof Dongil Kim (Seoul National University, South Korea)

#### Topic:

Challenges and Future Directions for Inbound and Outbound University Extension through Institutional Lifelong Learning: The Case of SNU's Extension College

12:30 - 12:45

Q & A Session 2

12:45 - 14:00

Lunch Break

14:00 - 14:30

Short Tour of HKMU Museum of Modern Chinese Literature

### Plenary Speakers 7 - 9 : Continuing Education Schools & the Skills Imperative

14:30 - 14:45

#### Plenary Speaker 7

Prof Timothy Chan (SIM Global Education, Singapore)

#### Topic:

Singapore's SkillsFuture Initiative: Lessons in Scaling Lifelong Learning through Strategic Partnerships

14:45 - 15:00

#### Plenary Speaker 8

Dr Fidella Tiew (Curtin University Malaysia, Sarawak)

#### Topic:

Strengthening Skills Through Partnerships and Training: Perspectives from Malaysia & Sarawak

15:00 - 15:15

#### Plenary Speaker 9

Eng Chiedza Masanganise (Bulawayo Polytechnic, Zimbabwe)

#### Topic:

Responding to the Skills Agenda: A Zimbabwean Perspective

15:15 - 15:30

Q & A Session 3

## Plenary Speakers 10 - 12 : Multiple Perspectives in Lifelong Learning in Universities

15:30 – 15:40	<b>MOU Signing Ceremony 1</b> HKMU LiPACE & Bulawayo Polytechnic, Zimbabwe
15:40 – 15:50	<b>MOU Signing Ceremony 2</b> HKMU LiPACE & Mahatma Gandhi University, India
15:50 – 16:00	<b>MOU Signing Ceremony 3</b> HKMU LiPACE & L.N. Gumilyov Eurasian National University, Kazakhstan
16:00 – 16:05	MOU Partner Photo Taking 1 (Ualikhanov University, Kazakhstan)
16:05 – 16:10	MOU Partner Photo Taking 2 (NLC Khalel Dosmukhamedov Atyrau University, Kazakhstan)
16:10 – 16:30	Tea Break & Networking
16:30 – 16:45	<b>Plenary Speaker 10</b> Dr Zhailagul Sagyndykova (Ualikhanov University, Kazakhstan) <b>Topic:</b> The Model of Lifelong Learning in Kazakhstan: The Experience of UALIKHANOV University
16:45 – 17:00	<b>Plenary Speaker 11</b> Mrs Lois McGrath (Bangor University, United Kingdom) <b>Topic:</b> Lifelong Learning Between the Lines: How Embedded Strategy Enables Innovation and Resilience in Higher Education
17:00 – 17:15	<b>Plenary Speaker 12</b> Ms Betty Yue (Imperial College London, United Kingdom) <b>Topic:</b> Learning Without Limits: A Spectrum of Opportunity Across Every Stage of Life at Imperial
17:15 – 17:30	Q & A Session 4
17:30 – 18:00	Discussion on Roundtable Statement Dr Mary Mahoney (Universities Association for Lifelong Learning , United Kingdom)
18:00 – 18:10	<b>Closing Remarks (Host)</b> Dr Benjamin Chan, Dean of HKMU LiPACE
18:30 – 20:00	Dinner & Networking

## DAY 2 CONFERENCE

 24 April, 2026

 12/F, Tower 2, Kowloon Commerce Centre, HKMU LiPACE Kwai Hing Campus

Time	Agenda
09:15 - 09:30	Networking
09:30 - 10:30	<b>Roundtable Discussions</b>  <b>1. Innovations in Flexible Learning, Credentialing and Partnership Development</b>  Theme Lead: Mr Gavin Day  <b>2. Adult Non-formal Learning and Programming for Cultural and Sustainability Themes</b>  Theme Lead: Prof Sajimon Abraham  <b>3. Responding to Skills Agenda for Economic and Social Concerns</b>  Theme Lead: Dr Doaa Salem Bashanfar
10:30 - 10:50	Tea Break
10:50 - 11:20	Reporting by 3 Theme Leads
11:20 - 11:30	Roundtable Hong Kong Statement
11:30 - 12:30	Closing of Day 2 & Guided Tour of Campus
12:30 - 14:00	Lunch Break
15:00 - 16:00	Post-Conference Musical Sharing by Mr Jan ČMEJLA (First Prize Winner, Bach Competition Leipzig 2025)

# Keynote / Plenary Speakers



## Prof Jonathan Michie

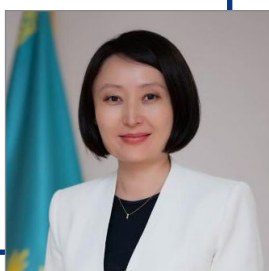
Pro-Vice-Chancellor, University of Oxford and  
President of Kellogg College,  
UALL Chair, United Kingdom

### Profile

Jonathan Michie OBE FAcSS is a Professor of Innovation and Knowledge Exchange at the University of Oxford, where he is Pro-Vice-Chancellor, President of Kellogg College, and an Honorary Norham Fellow in the Department of Education, and a member of the Department's SKOPE research centre. Before returning to Oxford in 2008, he was Dean of Birmingham Business School; before that he held the Sainsbury Chair of Management at Birkbeck, University of London, where he was Head of the School of Management & Organisational Psychology; and before that was at the Judge Business School, Cambridge, where he was also Fellow & Director of Studies in Economics at Robinson College, a Research Associate of the ESRC Centre for Business Research, and Director of the ESRC Research Programme on Contracts & Competition.

Jonathan moved into academia from Brussels, where he was an Expert to the European Commission.

Prof Michie became Chair of the Universities Association for Lifelong Learning (UALL) in May 2020. He is an Honorary Professor of Economics in the Education Department of the University of Nottingham; and Senior Fellow of Rutgers University, USA. He was joint secretary of the 2019 Centenary Commission on Adult Education, an Interdisciplinary Panel Member for REF2021, and is Managing Editor of the International Review of Applied Economics. Jonathan is a Fellow of the Academy of Social Sciences, and was awarded an OBE for his services to education and lifelong learning.



### **Ms Zhanna Uakasovna Yessinbayeva**

Deputy Chairperson of the Committee for Higher and Postgraduate Education, Ministry of Science and Higher Education of the Republic of Kazakhstan

#### **Topic**

**New Educational Models in Kazakhstan: Aligning with Labor Market Needs and Societal Demands**

#### **Profile**

Ms Zhanna Yessinbayeva a Candidate of Philology and a senior policymaker with over 15 years of experience in higher and postgraduate education. She oversees the planning and allocation of the state educational order, university admissions policy, and financing of higher education institutions.

She has led key national initiatives in education reform, including the development of regulatory frameworks and the administration of large-scale assessment systems such as the Unified National Testing.



## Prof Jari Multisilta

President of Satakunta University of Applied Sciences  
Chairman of ARENE (Rectors' Conference of  
Finnish Universities of Applied Sciences)

---

### Topic

#### How Digital Transformation Changes Lifelong Learning in Finland

### Profile

Prof Jari Multisilta, PhD, has served as the President and CEO of Satakunta University of Applied Sciences (SAMK) since September 2018. A distinguished leader in Finnish higher education, he currently serves as the Chair of ARENE (The Rectors' Conference of Finnish Universities of Applied Sciences). Prior to his tenure at SAMK, Prof Multisilta was the Director of the Pori University Consortium and held a long-term professorship in Multimedia at Tampere University of Technology.

His extensive academic background includes leadership of the Cicero Learning research network at the University of

Helsinki, as well as research positions at Stanford University and the Nokia Research Center. Prof Multisilta is a recognized expert in digital transformation, with research specializing in technology-enhanced learning, mobile environments, and collaborative education. Under his leadership, SAMK has prioritized the integration of emerging technologies into the modern academic landscape.

1



## Dr M.K. Biju

Head of Department of Lifelong Learning and Extension  
Mahatma Gandhi University, India

### Topic

**Lifelong Learning for the Social Good - A Reflection from Mahatma Gandhi University Kerala**

### Profile

Dr M.K. Biju is a graduate in Engineering from NIT, Trichy and MBA from Mahatma Gandhi University, Kottayam. He has done PG Diploma in Operations Management (PGDOM) from IGNOU, New Delhi with Gold Medal from Hon'ble Vice-President of India and M.Phil. from Madurai Kamaraj University, Madurai. He received the Ph.D. from Kannur University, Kannur in the area of Logistics and Supply Chain Management in 2013. He was awarded "Accredited Management Teacher (AMT)" by All India Management Association (AIMA), New Delhi in 2010.

After a year in the industry, he started teaching in 2002 and has been working in Mahatma Gandhi University, Kottayam, Kerala for the last 12 years. He is a Member of the Senate of the University and is in the Board of Studies of various Universities. He is heading the

Department of Lifelong Learning and Extension at the University. He is also currently the Joint Director of University Centre for International Co-operation. He was previously the Director (i/c) of The Department of Student Services at the University taking care of students' welfare, Student Union activities and Youth Festivals for the jurisdiction of the University covering nearly 300 colleges. He is in-charge of Students Web Centre of the University. He has produced 4 Ph.D.s and 7 M.Phil. researchers and presently supervising 4 Ph.D. domestic researchers and 1 international student. He published 49 papers in journals and presented papers in 44 conferences. He authored a book and also contributed chapters to 14 edited books. He is a resource person to various academic seminars and games and cultural events at various Universities.



## Dr Ardak Bakhytovich Beisenbay

Vice-Rector for Academic Affairs

L.N. Gumilyov Eurasian National University, Kazakhstan

### Topic

**Institutionalising Lifelong Learning in a National Research University: The ENU Model**

### Profile

Dr Ardak Bakhytovich Beisenbay is Vice-Rector for Academic Affairs at L.N. Gumilyov Eurasian National University (ENU), one of the leading national research universities in Kazakhstan and Central Asia. In this role, he oversees the university's academic policy, development of educational programmes, quality assurance in higher education, and the advancement of innovative teaching and learning models.

Dr Beisenbay holds a Candidate of Philological Sciences degree and graduated from ENU with a specialization in Kazakh Language and Literature. His academic career spans nearly two decades and has been closely connected with the development of higher education and academic leadership within the university.

He began his professional career in 2005 as a Teaching Assistant and subsequently served as Lecturer and Senior Lecturer. He later held key academic leadership

positions, including Deputy Dean for Academic Affairs and Deputy Dean for Research at the Faculty of Philology. In 2016, he was appointed Head of the Department of Kazakh Linguistics, and from 2019 served as Dean of the Faculty of Philology, contributing significantly to the development of academic programmes and research initiatives.

Dr Beisenbay is the author of more than 100 scientific and scholarly publications, including articles indexed in international citation databases such as **Web of Science and Scopus**. His research interests focus on Kazakh linguistics, philology, and the modernization of higher education systems.

He is also a recipient of the prestigious international scholarship of the First President of the Republic of Kazakhstan, "**Bolashak**", which supports advanced academic and professional development of leading specialists.

3



## Ms Leila Guerra

Associate Vice President (Education), London School of Economics and Political Science, United Kingdom

### Topic

#### Lifelong Learning and AI Strategies

### Profile

Ms Leila Guerra is Associate Vice President (Education) at the London School of Economics and Political Science (LSE), shaping strategy for lifelong learning, executive education and online, non-degree programmes. She brings over 20 years of international leadership in higher education, most recently as Associate Provost (Digital Lifelong Learning) at Imperial College London and Vice Dean (Education) at Imperial College Business School, where she oversaw undergraduate and postgraduate portfolios, led growth and student experience, launched the School's first undergraduate degree, and directed the award-winning iDEA Lab (Innovation, Digital Education & Analytics). At Imperial, Leila also led the university's lifelong learning agenda and helped launch the Institute of Extended Learning to expand flexible, stackable skills training for professionals and organisations.

Prior to Imperial, Leila was Assistant Dean of Postgraduate Programmes at Singapore Management University's Lee Kong Chian School of Business, Executive Director for Early Careers Programmes at London Business School, and Director of Innovation at IE Business School in Madrid. She serves on multiple educational international boards and advisory bodies, including the Politecnico di Milano School of Management Advisory Board and EGADE (Mexico), and contributes regularly to sector events on digital strategy and the future of learning.

A multilingual leader who has worked across Europe and Asia, Leila's interests span digital learning, interdisciplinary collaboration, and inclusive, human-centred education that delivers measurable outcomes for learners and employers alike.



## Prof Mahmoud Allam

Dean of School of Continuing Education,  
American University in Cairo, Egypt

### Topic

**Experience Sharing from The American University in Cairo's (AUC) School of Continuing Education**

### Profile

Prof Mahmoud Allam brings with him a wealth of experience in academia, industrial consultation and business acumen. From 2019 to 2022, he served as the founding president of the Knowledge Hub Universities, hosting and operating Coventry University Branch in Egypt. Before that, he was the associate dean for industrial partnerships and extended education at AUC's School of Sciences and Engineering.

Prof Allam was a member of the core team that founded Nile University in 2003. Since then and until 2018, he served in many key roles including professor and programme director for software engineering and computer engineering, founding dean of the School of Communication and Information Technology, assistant provost for academics, and vice president for

finance and administration. Earlier in his career, he founded and chaired the information systems department at Université Française d'Égypte, and taught as adjunct faculty in several academic institutions including the electronics engineering department at AUC from 2003 to 2007. Before returning to Egypt, Prof Allam worked as a research fellow at the Ultrasound Research Lab, Mayo Clinic, USA. He was a consultant for several industrial companies and international organizations. He is a senior member of the IEEE and ex-chairman of board and founding board member of Internet Masr (Internet Society – Egypt Chapter).

5



## Dr Medeé Rall

Former Director, Centre for Extra-Mural Studies & Honorary Research Associate, Centre for Higher Education Development, University of Cape Town, South Africa

### Topic

#### Adult Non-formal Learning: A South African University Model

### Profile

Dr Medeé Rall is a prominent South African educator and administrator who has dedicated over two decades to the University of Cape Town (UCT). An expert in adult education and heritage studies, she holds four degrees from the institution, including a 2019 PhD that examined the decolonization of museum displays. Throughout her career, she has been a tireless advocate for lifelong learning, serving for 23 years as the Director of UCT's Centre for Extra-Mural Studies (CEMS) and leading the transformation of the university's flagship Summer School into a diverse, public-facing programme.

Following her formal retirement from CEMS in December 2025, Dr Rall remains active at the university in 2026 as an Honorary Research Associate in the Centre for Higher Education Development at UCT. Her legacy is defined by her efforts to bridge the gap between academia and the public, ranging from her 20 years of literacy teaching in Langa to her strategic partnerships with national museums. She is widely recognized for her commitment to social impact and for ensuring UCT's intellectual resources are accessible to all members of the community.

6



## Prof Dongil Kim

Director, Seoul National University Extension College,  
South Korea

---

### Topic

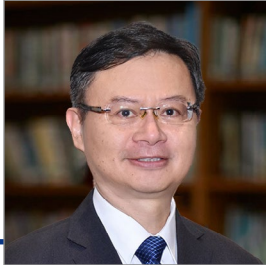
**Challenges and Future Directions for Inbound and Outbound University Extension through Institutional Lifelong Learning: The Case of SNU's Extension College**

### Profile

Prof Dongil Kim is currently taking his role as the Director of Seoul National University Extension College, specializing in educational psychology and counseling. He is a highly influential figure in South Korean education, notably served as the Director of the Student Counseling Center at SNU and led several key academic bodies, including the Special Education Research Institute (SERI) and the National Academy for Educational Administrators. Professionally, he has held the presidency of both the Korean Child Adolescent Counseling Association and the Korean Educational Psychology Association, underscoring his leadership in the field.

Prof Kim's extensive research portfolio includes over 300 articles and 50 books focused on the counseling and educational needs of diverse student populations. He is particularly recognized for his national-level work on internet and smartphone addiction interventions, for which he received a government citation for distinguished service in 2008. His academic background includes a PhD from the University of Minnesota and degrees from Seoul National University, establishing a strong foundation for his expertise in learning disabilities, multicultural counseling, and psychometric scale development.

7



## Prof Timothy Chan

Deputy Provost, SIM Global Education, Singapore

### Topic

**Singapore's SkillsFuture Initiative: Lessons in Scaling Lifelong Learning through Strategic Partnerships**

### Profile

Professor Timothy Chan is a seasoned academic leader with over 35 years of dedicated service to higher education.

Currently, as Deputy Provost at SIM Global Education, he provides strategic oversight for all academic services and programmes, ensuring the delivery of quality education and fostering a dynamic learning environment. His extensive and diverse experience encompasses teaching, research, and advisory roles that have spanned Singapore, Hong Kong, China, and the United Kingdom, contributing to the advancement of numerous higher education institutions within these regions.

As a published author, notably of an Accounting textbook, and a researcher, he has successfully led research projects

funded by the European Union and China, demonstrating his commitment to knowledge creation and innovation. Prof Chan's expertise is further recognized through his Fellowships with the Singapore Computer Society and CPA Australia, reflecting his professional standing and contributions to these fields. Beyond academia, he is deeply engaged in professional and youth communities, actively serving in key positions with organizations such as CPA Australia (Singapore), the Singapore Association for Private Education, and Youth Corps Singapore, where he contributes to the development of future leaders. Prof Chan holds a PhD in Higher Education from the University of Nottingham, United Kingdom.



## Dr Fidella Tiew

Dean of School of Pre-U and Continuing Education,  
Curtin University Malaysia, Sarawak

### Topic

**Strengthening Skills Through Partnerships and Training: Perspectives from Malaysia & Sarawak**

### Profile

Dr Fidella Tiew is a seasoned academic leader and Dean of School of Pre-U and Continuing Education, bringing over 24 years of experience in higher education teaching and administration. Throughout her distinguished career at Curtin, she has held various pivotal roles, including Head of Student Services, Department Head of Marketing, and Lecturer specializing in Services Marketing, Event Management, and Public Relations. Prior to her academic tenure, Dr Tiew established a strong professional foundation in the hospitality industry, where she held management positions across food and beverage, human resources, and event planning.

A prolific researcher, Dr Tiew holds a PhD in Marketing from Curtin University and focuses her scholarly work on event

management impacts, stakeholder salience, and destination marketing. She has led numerous high-profile projects, including a Fundamental Research Grant Scheme (FRGS) study on digital information-seeking behavior and investigations into student engagement during the post-pandemic era. Her extensive portfolio of publications in journals such as *International Journal of Contemporary Hospitality Management* and *Event Management* underscores her expertise in bridging the gap between industry practice and academic innovation. She also served as an Accredited Trainer under Human Resource Development Corporation (HRD Corp).



## Eng Chiedza Masanganise

Principal of Bulawayo Polytechnic, Bulawayo,  
Zimbabwe

### Topic

#### Responding to the Skills Agenda: A Zimbabwean Perspective

### Profile

Engineer Chiedza Masanganise is a groundbreaking civil engineer, academic leader, and advocate for gender equality in Technical and Vocational Education and Training (TVET). In 1989, Eng Masanganise began her professional career as a Graduate Engineer with the Bulawayo City Council. Two years later, in 1991, she joined Bulawayo Polytechnic as the first and only female lecturer in the Civil Engineering Department. Her leadership potential quickly became evident, and by 1994, she was appointed Head of the Civil Engineering Department, a role in which she served with distinction.

In January 2005, she became the inaugural Chairperson for the Bachelor of Technology in Water Resources Engineering at Bulawayo Polytechnic. She played a pivotal role in expanding the programme to attract students nationwide, ensuring its relevance to Zimbabwe's water resource needs.

Her leadership trajectory continued, and in 2016, Eng Masanganise was appointed

substantive Vice Principal of Bulawayo Polytechnic, the first woman to hold this position. In September 2023, she broke another glass ceiling by becoming the first female Principal of Bulawayo Polytechnic since the institution's establishment in 1927. Her leadership extends beyond Zimbabwe. In September 2024, during the Association of Technical Universities and Polytechnics in Africa (ATUPA) Research Conference in Kenya, she was appointed Regional Gender Representative for Southern and Central Africa.

As a researcher, Eng Masanganise has contributed to scholarly work, including: Knowledge, Attitudes and Practices of Students towards their Sexual and Reproductive Health Rights in Tertiary Institutions: A Case Study of Bulawayo Polytechnic published at the International Journal for Innovative Research and Development.



## Dr Zhailagul Sagyndykova

Vice-Rector for Internationalization and Infrastructure Development of Ualikhanov University, Kazakhstan

### Topic

**The Model of Lifelong Learning in Kazakhstan: The Experience of UALIKHANOV University**

### Profile

Dr Sagyndykova Zhailagul holds a PhD in Linguistics (Kazakhstan), a global ambassador of Penn State University (USA), a recipient of the prestigious Bolashak Presidential Scholarship in Kazakhstan, and the title-holder of The Best Lecturer of the Republic of Kazakhstan in 2016.

Since 2012, Dr Sagyndykova worked for 2 years as Head of Academic Mobility and the Bologna Process Department at Ualikhanov University in Kazakhstan, later proceeding her career at Penn State

University as a research intern at Penn State Law and Penn State Global. In 2018, she held the position of Associate Professor of the Department of English and Teaching Methods at Ualikhanov University then worked as Head of the Department of Development and Alumni Relations at Narxoz University (Kazakhstan) until 2021.

In 2021, Dr Sagyndykova assumed the duties of Vice-Rector for Internationalization and Infrastructure Development.



## Mrs Lois McGrath

Trustee of UALL,  
Registry Manager, Bangor University, United Kingdom

### Topic

**Lifelong Learning Between the Lines: How Embedded Strategy Enables Innovation and Resilience in Higher Education**

### Profile

Lois McGrath (LLB, SFHEA) is a higher education professional specialising in flexible lifelong learning, micro-credentials, and widening access to professional and academic study. Her work focuses on supporting academics to extend the reach of their teaching and research through alternative learning pathways for wider audiences, including bespoke programmes, non-credit learning, and micro-credentials.

She is a Trustee of the Universities Association for Lifelong Learning (UALL), contributing to sector discussions on the development and resilience of lifelong learning within universities. At Bangor University in Wales, she serves as Registry Manager for Flexible Lifelong Learning within the Quality and Standards team. In this role she works on developing institutional frameworks and workflows that support flexible provision, including micro-credentials, short courses, and continuing professional development.

Prior to this, Lois was Professional Development Portfolio Manager in Bangor University's College of Medicine and Health, where she led the development of

a portfolio of professional development programmes and micro-credentials in collaboration with academic schools and external partners.

A Senior Fellow of the Higher Education Academy, Lois is actively involved in sector initiatives exploring the development of micro-credentials and flexible learning. She is a member of the QAA Micro-credentials Special Interest Group for the tertiary education sector in Wales, and contributes to wider discussions on how universities can embed lifelong learning more effectively within institutional strategy.

Working at the intersection of academic and professional practice as a "third-space" higher education professional, her work explores how institutional strategy can enable lifelong learning to develop not only through formal initiatives, but also through the often-unseen structures and collaborations that make innovation possible.



## Ms Betty Yue

Director of Professional Development and Summer Programmes, Imperial College London, United Kingdom

### Topic

**Learning Without Limits: A Spectrum of Opportunity Across Every Stage of Life at Imperial**

### Profile

Betty Yue is the Director of Professional Development and Summer Programmes at Imperial Lifelong Learning. She leads the strategic development and delivery of a diverse portfolio of lifelong learning and summer programmes across the University.

She is an active member of the University Programmes Committee, providing quality assurance oversight and reviewing proposals for new or significantly revised undergraduate and Master's-level taught programmes. She has chaired and led a reference panel as part of a curriculum review under Imperial College's Learning and Teaching Strategy and is currently leading the development of micro-credentials at Imperial, offering innovative learning opportunities that broaden access and flexibility for learners worldwide.

Beyond her core role, Betty co-founded an external CPD network, chairs sector-wide events to share best practice in lifelong learning, and co-represents Imperial at the Universities Association for Lifelong Learning. She is a former Chair of Imperial As One, the University's race equality advisory network, where she championed professional development opportunities for BME staff. She also co-chairs the Academic Services Equality, Diversity and Inclusion Steering Group and the Lifelong Learning EDI Working Group, demonstrating her commitment to creating both inclusive learning environments and a diverse, welcoming workplace.



Convenor



### Dr Mary Mahoney

Trustee and Secretary of UALL, United Kingdom

#### Profile

Dr Mahoney's background is in public health policy and the vital role of learning as a key determinant of population health. She has an extensive track record in leadership in teaching, research and knowledge exchange and has worked in higher education in Australia, England and Wales. She has established departments of lifelong learning, adult community learning facilities and innovative employer-responsive higher education programmes. Until late 2022 she was the Director of Access and Lifelong Learning at the University of Wolverhampton. She is now a freelance education consultant. Her recent work has focused on policies and practice to enable access to education and learning for adults across the lifespan for a range of reasons.

She has led on a range of strategic initiatives and worked on both WHO Healthy City and

UNESCO Learning City initiatives focusing on the role of learning in economic and social transformation. She has an extensive publication record and is a member of the Editorial Board of the Widening Participation and Lifelong Learning Journal, a Fellow of the Royal Society for the Arts based on her contribution to Lifelong Learning, a Governor of Walsall College, a very large Further Education College and a member of the Wolverhampton Adult Education Service Advisory Board in England. In 2022, Mary's contribution to the field was formally recognised by the Institute of Continuing Education, University of Cambridge on its Honour Roll. She is a Member of Kellogg College at Oxford University.



## Panel Lead for Theme 1: Innovations in Flexible Learning, Credentialing and Partnership Development



### Mr Gavin Day

Chief Operation Officer and Business Development Manager,  
University of Oxford, Department for Continuing Education,  
United Kingdom

#### Profile

Mr Gavin Day is the Chief Operating Officer (COO) and Business Development Manager at the University of Oxford's Department for Continuing Education, where he oversees the operational strategy and growth of Professional and Online Accredited Courses. In this capacity, he leads the department's efforts to expand its lifelong learning initiatives and professional development programmes, ensuring that Oxford's world-class educational resources are accessible to a global audience. He works closely with the Director of Finance and Administration to drive efficiency and sustainable business growth within the department.

With a career spanning over two decades, Mr Day brings extensive leadership and operational expertise to the University. Prior to his current role, he served as the department's Director of Operations and held the position of Head of Operations at XPAuto. His professional foundation was built during a distinguished 22-year tenure in the Royal Air Force, where he served as a Principal Air and Space Operations Manager. This background in high-stakes operational management now informs his approach to navigating the complexities of higher education and professional training.



## Panel Lead for Theme 2: Adult Non-formal Learning and Programming for Cultural and Sustainability Themes



### **Prof Sajimon Abraham**

Director International Affairs, Mahatma Gandhi University,  
India

#### **Profile**

Prof Sajimon Abraham is a distinguished academician and the Honorary Director of the University Centre for International Co-operation (UCIC) at Mahatma Gandhi University, India. With over 30 years of teaching experience, he serves as a Professor in the School of Management and Business Studies, specializing in Computer and IT. His extensive background includes a tenure at the Royal University of Bhutan through a technical cooperation scheme with the Indian Ministry of External Affairs, highlighting his commitment to international academic exchange and institutional development.

An accomplished researcher, Prof Abraham holds advanced degrees in Mathematics, Computer Applications, and Business Administration, as well as a Ph.D. in Computer Science. His expertise spans Spatio-Temporal Data Mining, Business Analytics, and Big Data Management, with a prolific publication record of over 110 research papers. To date, he has successfully guided eight Ph.D. candidates, contributing significantly to the fields of data science and management. More details on his international initiatives can be found through the University Centre for International Co-operation.



## Panel Lead for Theme 3: Responding to Skills Agenda for Economic and Social Concerns



### **Dr Doaa Salem Bashanfar**

Senior Director, Outreach & Partnerships,  
The American University in Cairo, Egypt

#### **Profile**

With over 20 years of experience in continuing education and professional development, Dr Salem is deeply committed to preparing individuals for the evolving demands of today's job market. She champions lifelong learning and the development of adaptable skills as critical drivers of success in a rapidly changing world.

Throughout her career, Dr Salem has led innovative learning and development initiatives, forged strategic partnerships, and designed impactful programs that equip learners with the competencies

needed to excel. Beyond workforce development, she is dedicated to expanding access to education and training, with a strong focus on empowering youth and women and supporting communities with limited access to opportunities.

Dr Salem is passionate about fostering a culture of continuous learning; enabling individuals to anticipate change, seize emerging opportunities, and thrive in an increasingly dynamic workforce.

Special  
Information for  
**Participants**



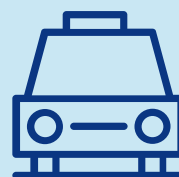
# Special Information for Participants



## Direction from the Airport to the Designated Hotel

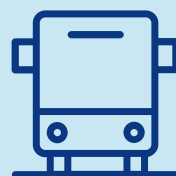
(The Cityview Hotel - The Cityview, 23 Waterloo Road, Yau Ma Tei )  
城景國際，油麻地窩打老道 23 號

The most direct and comfortable option is to take a taxi from the airport. The journey to the Cityview Hotel covers a distance of about 30 km and takes approximately **25-30 minutes**, depending on traffic conditions. The fare is roughly **HK\$240 to HK\$340**, plus a nominal fee of HK\$6 per piece of luggage placed in the boot. It is helpful to have the hotel's address written in Chinese (refer to the name and address provided above) to show the driver.



**By  
Taxi**

For a balance of cost and convenience, the Cityflyer bus **A21** is an excellent choice. You can catch this bus directly from the airport, and the journey to Yau Ma Tei takes about **40 to 55 minutes**. The fare is approximately **HK\$33**. You should alight at the "**Man Ming Lane**" stop on **Nathan Road**, which is about a 200-metre walk from the hotel.



**By  
Bus**

The fastest public transport option is the Airport Express train. The train ride itself from the airport to **Kowloon Station** takes about **20-24 minutes** and costs roughly **HK\$90-115** for a single ticket. From Kowloon Station, you can take the complimentary Hotel Shuttle Bus **K5**, which will take you directly to the Cityview Hotel in about 10 minutes. The total journey time is around **30-35 minutes**.



**By  
MTR  
(Airport  
Express)**

# Special Information for Participants



## Pre-conference Cultural Event – Gathering for Invited VIPs and Participants (Day 0)

All invited VIPs and participants attending the upcoming plenary session and roundtable meeting will gather at the HKMU Main Campus for an exclusive pre-conference event networking evening. Designed to foster early connections and rapport, the gathering features a unique cultural performance element, along with a welcome dinner, with details provided as follow:

<b>Date:</b>	22 April 2026 (Wednesday)
<b>Time:</b>	6:00 pm to 8:45 pm
<b>Venue:</b>	Foyer, Jockey Club Council Chamber, 12/F, Cheng Yu Tung Building, Main Campus, HKMU, Hong Kong
<b>Address:</b>	30 Good Shepherd Street, Ho Man Tin, Kowloon, Hong Kong



## Post-conference Musical Performance – Mr Jan Čmejla's Sharing Session (Day 2)

Mr Jan Čmejla is a pianist from Czechia. He is the First Prize Winner of the International Johann Sebastian Bach Competition Leipzig 2025.

<b>Date:</b>	24 April 2026 (Friday)
<b>Time:</b>	3:00 pm to 4:00 pm
<b>Venue:</b>	Room 1103 (Czech Classical Music Room), 11/F, Tower 2, Kowloon Commerce Centre, HKMU LiPACE, Hong Kong
<b>Address:</b>	51-53 Kwai Cheong Road, Kwai Chung, N.T., Hong Kong



## Meals Provided by the Host

In addition to the dinner arranged for all invited participants in the pre-conference cultural event gathering to be held on 22 April 2026, registered participants will enjoy refreshments and lunch to be arranged in the 2-day roundtable event (Day 1 & Day 2, 23-24 April 2026).



## Transportation Provided by the Host

Free shuttle service will be provided to participants who will be staying at the designated hotel (The Cityview Hotel) to get access to and from the two venues from Day 0 to Day 2, 22-24 April 2026. Detailed arrangements will be announced by email later.



## Walking from Designated Hotel (The Cityview Hotel) to HKMU Main Campus (Venue for Day 0 & Day 1)

For participants staying at the designated hotel who decide not to take the free shuttle service arranged by the host, a 17 minutes' walk to the Main Campus (Venue for Day 0 & Day 1) is an option, with directions shown below. Participants are advised to take the free shuttle service to the Kwai Hing Campus on Day 2.

When you see the Esso Oil Station, turn right to the Pui Ching Road.

Walk up to the foot bridge until you see the HKMU's entrance



## Emergency Hotlines

When visiting Hong Kong as a tourist, it's essential to have access to emergency hotlines for immediate assistance in case of any emergencies. Here are a few important emergency hotlines in Hong Kong:

<b>Emergency Services</b> (Police, Fire, Ambulance)	<b>999</b>
<b>Hong Kong Tourist Police Hotline</b> (The Hong Kong Tourist Police Hotline is specifically dedicated to assisting tourists with any issues they may encounter.)	<b>+852 2369 9939</b>
<b>Hospital Authority Hotline</b> (The Hospital Authority Hotline can provide information on hospitals, medical services, and help in case of medical emergencies.)	<b>+852 2300 6555</b>
<b>Immigration Department Hotline</b> (The Immigration Department Hotline can assist with inquiries related to visas, immigration procedures, and passport-related issues.)	<b>+852 2824 6111</b>

It's recommended to save these numbers in your phone or keep them easily accessible during your visit.



## Electricity

Type G sockets are commonly used in Hong Kong. The standard voltage is 220V and 50 Hz. Please carry with you an adapter if needed.

# Organisers and Partners

## Organisers



### Hong Kong Metropolitan University Li Ka Shing School of Professional and Continuing Education

The Li Ka Shing School of Professional and Continuing Education (LiPACE) is one of the eight constituent schools of Hong Kong Metropolitan University. Originally established in 1992 as the Centre for Continuing and Community Education (CCCE) and renamed as LiPACE in 2000, it has carried out its original mission of serving the broadest range of learners in HK. LiPACE is now an established Vocational Professional Education and Training (VPET) provider of full-time post-secondary education and part-time professional and continuing education as well as corporate training. At the same time, it advances non-formal community learning through its 'Elder Academy' and 'Parent Education Hub' to enrich the lives of senior citizens and deliver outreach activities to strengthen family and community engagement respectively.

Link: [www.hkmu.edu.hk/lipace/](http://www.hkmu.edu.hk/lipace/)

## Partners

### Dialogue Partner



### Universities Association for Lifelong Learning (UALL)

The Universities Association for Lifelong Learning (UALL) seeks to champion the broader definition of lifelong engagement with universities through part-time flexible provision offering personal, community and vocational development. It does so through advocacy in policy development, dissemination of information on policy, practice and funding through a lively programme of events, and through research and publication. UALL is structured to respond to change in higher education: for example the developing emphasis on public engagement and the university as a regional resource.

UALL is a membership subscription organisation, a registered UK charity, and is governed by a formal constitution. Each member institution nominates one or more individuals to the Council, the primary voting and decision-making body. The Executive Committee assists the Council in preparation and prioritising of agendas.

Link: <https://uall.ac.uk/>

### Cultural Partner



SOUTH AFRICAN CONSULATE GENERAL  
HONG KONG SAR & MACAU SAR, PRC.  
(Also accredited to Macao SAR, PRC)

### South African Consulate General Hong Kong SAR & Macao SAR, PRC.

The South African Consulate General in the Hong Kong Special Administrative Region (SAR) and Macao SAR, PRC, is a diplomatic mission that serves to represent and promote South Africa's national interests in these two territories. Its primary functions are to provide consular services to South African citizens and to strengthen bilateral relations, including trade, investment, and tourism, between South Africa and the SARs.

Link: <https://sacg.hk/>

### Academic Partners



### Supporting Organisation



# Notes

## 2026 China-Africa Year of People-to-People Exchanges

### Promotion of Egyptian Cultural Heritage



**March 2 (Mon, pm)**



Consul-General Baher Sheweikhi to visit Tsang Pik Shan (Sung Lan) Secondary School and deliver Opening Remarks



Sharing of Egypt in HK by **Dr Benjamin Chan (Dean)**

### Cultural Partnership with Schools



**April 21 (Tues, pm)**



- ▶ Consul-General Mojalefa Mogono to award certificates to secondary school students (Zulu Love Letter Competition)
- ▶ South African cultural performances



### Cultural Night



**April 22 (Wed, evening)**

- ▶ Welcoming event for participants to the Roundtable on University Continuing Education Schools
- ▶ South African cultural performances



### Inaugural Roundtable on University Continuing Education



UNIVERSITY OF CAPE TOWN



The American University in Cairo

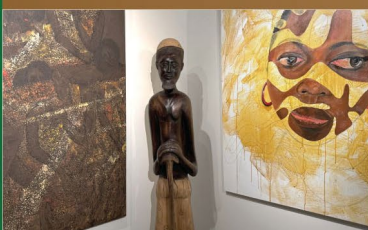


**April 23 (Thurs) & April 24 (Fri, am)**

Participation by 3 African universities (The American University in Cairo in Egypt, University of Cape Town in South Africa, and Bulawayo Polytechnic in Zimbabwe) at this gathering of 15 universities from 10 countries.



### Internationalization-in-Place for Staff



**May 29 (Fri, pm)**

Mini-retreat and Reunion with Zimbabwe's Consulate-General (Hong Kong) staff



Guest of Honour **Elias Mutamba**  
Consul-General



# *From Leipzig to LiPACE: A Musical & Cultural Interlude*



## *Jan Čmejla*

### **2025 LEIPZIG BACH First Prize Winner**

**Date:** 24 April 2026 (Fri)

**Time:** 3:00-4:00pm

**Venue:** Czech Classical Music Room, 11/F,  
Kwai Hing Campus



**Guest of Honour**  
**Mrs. Klára JURČOVÁ**  
Consul-General of the Czech  
Republic in Hong Kong and  
Macau



**Special Guest**  
**Mr. Alan CHU**  
Founder and Chairman of  
International Association of  
Collaborative Musicians (IACM)



HKMU LiPACE

[www.hkmu.edu.hk/lipace/](http://www.hkmu.edu.hk/lipace/)  
✉ [lipace@hkmu.edu.hk](mailto:lipace@hkmu.edu.hk)  
☎ 3120 9988  
☎ 2381 8456

📍 HKMU Li Ka Shing School of Professional and Continuing Education  
Kwai Hing Campus - 8/F-12/F, Tower 2, Kowloon Commerce Centre  
51-53 Kwai Cheong Road, Kwai Chung, N.T.

Follow us:



hkmulipace



hkmulipace



hkmulipace

# Contact Information

For any additional information and assistance, please contact:

## **Event Organising Committee**

### **Dr Larry Ching**

✉ lching@hkmu.edu.hk

☎ +852 94927408 / +852 35887896

☎ +852 94927408 / +852 35887896

### **Ms Julia Hui**

✉ jwyhui@hkmu.edu.hk

☎ +852 31209725

☎ +852 62221345

### **Ms Charlotte Cheung**

✉ okcheung@hkmu.edu.hk

☎ +852 31209889

☎ +852 31209889